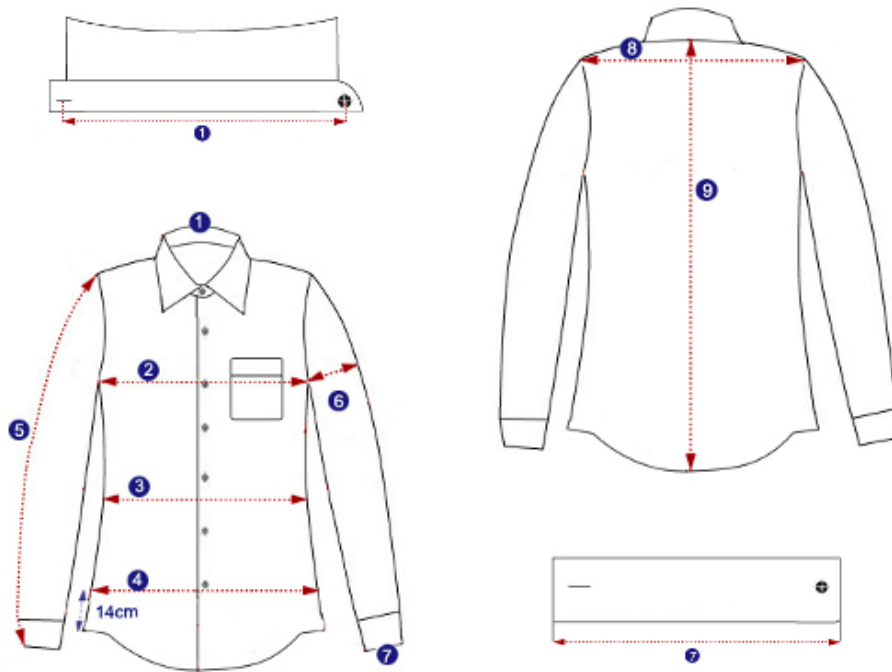


Measure A Favorite Shirt

Tips on measuring

- The garment is made of woven non-stretch fabric.
- Lay the garment down flat, smooth out any wrinkles so its front is the same size as the back.
- The measurements should be taken to the nearest half (0.5) centimeter or quarter (0.25) inch.
- Measure twice! If you don't get the same measurement both times, try again.



Measure a favorite shirt <input type="checkbox"/> cm ; <input type="checkbox"/> inch	
1. Collar	Measure from the center of the buttonhole to the button center.
2. Chest	Measure the chest at the widest part from armpit to armpit, multiply by 2.
3. Waist	Measure from one side to the other at the narrowest part of the waist, multiply by 2.
4. Hip	Measurement from one side to the other at 14cm above the bottom edge, multiply by 2.
5. Sleeve length	Measure straight down from shoulder-sleeve joint to the end of the sleeve.
6. Bicep	Measure across the sleeve at its widest part from the armpit to the other end, multiply by 2.
7. Cuff	Measure the distance between the cuff edge.
8. Shoulder	Measure the distance between the left and right top shoulder point.
9. Back length	Measure straight down from the centre of collar seam to the hem of the shirt.