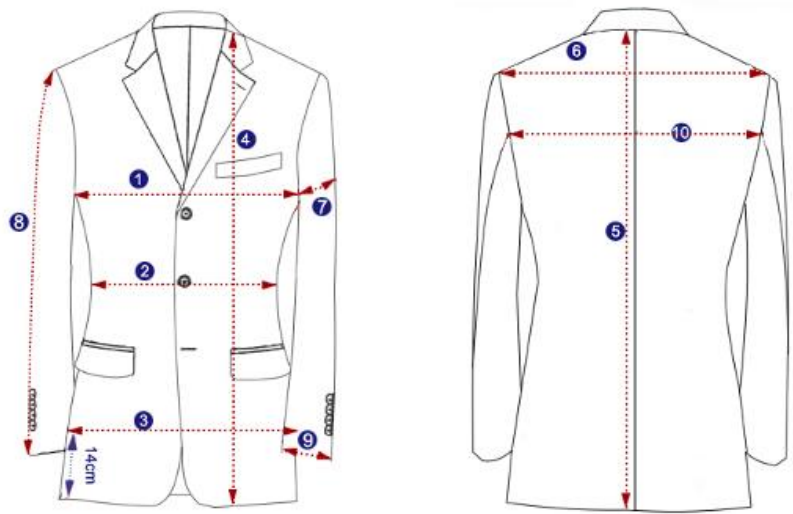


# Measure A Favorite Jacket

## Tips on measuring

- The garment is made of woven non-stretch fabric.
- Lay the garment down flat, smooth out any wrinkles so its front is the same size as the back.
- The measurements should be taken to the nearest half (0.5) centimeter or quarter (0.25) inch.
- Measure twice! If you don't get the same measurement both times, try again.



Measure a favorite jacket <input type="checkbox"/> cm ; <input type="checkbox"/> inch	
1. Chest	Measure the chest at the widest part from armpit to armpit, multiply by 2.
2. Waist	Measure from one side to the other at the narrowest part of the waist, multiply by 2.
3. Hip	Measure from one side to the other at 14cm above the hem, multiply by 2.
4. Front length	Measure from the collar shoulder point straight down to the hem of the jacket.
5. Back length	Measure from the centre of the back collar seam to the hem of the jacket.
6. Shoulder	Measure from the left top shoulder point to the right.
7. Bicep	Measure across the sleeve horizontally at its widest part from the armpit to the other end, multiply by 2.
8. Sleeve length	Measure straight from shoulder-sleeve joint to the end of the sleeve.
9. Cuff	Measure cuff from the left seam to the right seam, multiply by 2.
10. Back width	Measure horizontally from the left sleeve seam to the right sleeve seam.